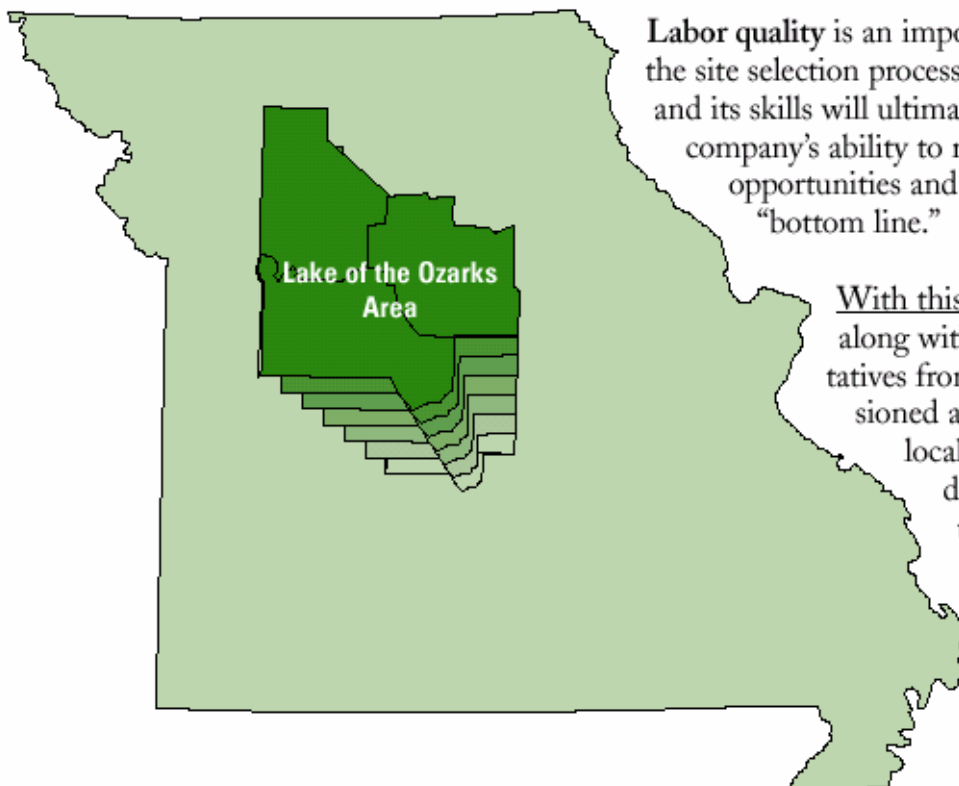


Quality Workforce

Lake of the Ozarks Area Has It and Can Prove It!



Labor quality is an important consideration in the site selection process. An area's workforce and its skills will ultimately determine your company's ability to respond to competitive opportunities and contribute to the "bottom line."

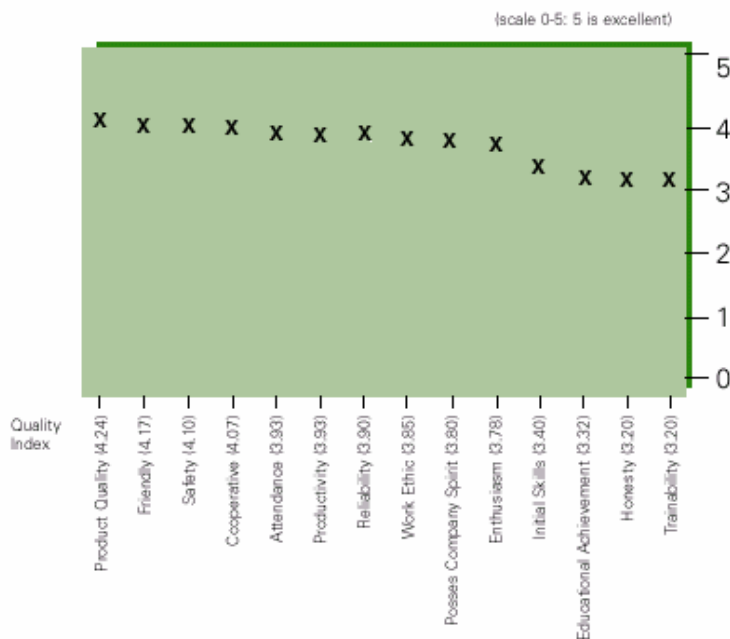
With this in mind, AmerenUE, along with development representatives from the county, commissioned an independent survey of local business managers to determine the labor quality of the Lake of the Ozarks Area. Some of the results of this survey are contained in this brochure.

FOR A COMPLETE COPY OF THE SURVEY RESULTS . . .

See the complete survey results on this web site or contact Scott Christensen at the City of Camdenton at 573-346-3600.



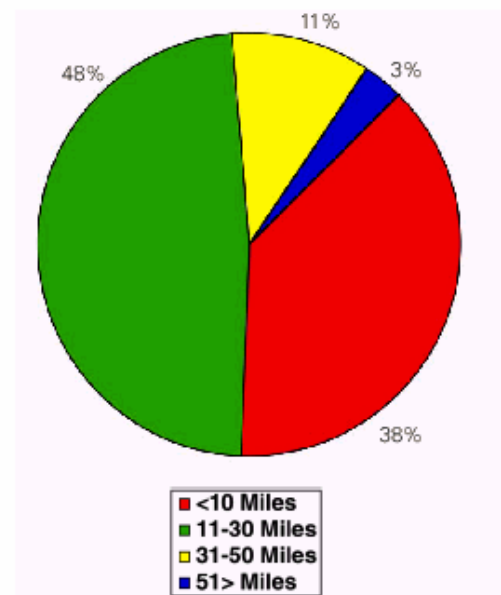
LABOR QUALITY CHARACTERISTICS



Key Points:

Productive quality, safety, honesty are strong characteristics of the workforce.

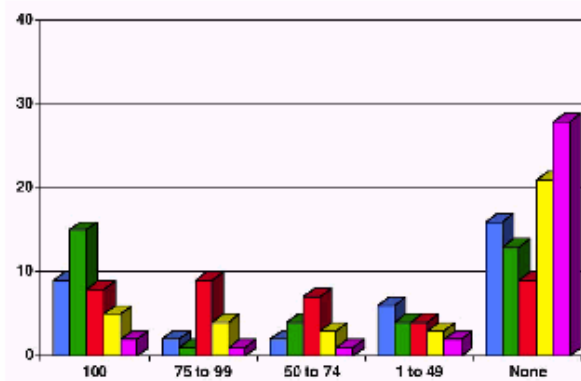
COMMUTING DISTANCES



Key Points:

A large percentage of the workforce commutes 11-30 miles that shows highly mobile workforce

EMPLOYER BENEFIT PLANS



Key Points:

- 95% of those provide health insurance
- 54% of employers provide some form of pension
- Average number of holidays is 7.3, while the national average is 9.3
- The estimated average dollar contribution for benefits as a percentage of wages is 22.2 percent.

AVERAGE HOURLY WAGE BY TITLE

Occupation	Average Starting Wage	Average High Wage
1. Sales Person-Retail	\$6.53	\$9.62
2. Computer Programmer	\$12.00	\$22.75
3. Cashier	\$6.81	\$9.00
4. Janitors & Cleaners	\$8.81	\$11.10
5. Chef	\$13.33	\$20.19
6. Office Manager	\$12.00	\$24.04
7. Assembly Worker I	\$9.98	\$12.50
8. Clerk/Receptionist	\$7.65	\$11.54
9. Data Entry 1	\$8.00	\$11.00
10. Fork Lift Driver	\$10.00	\$12.00
11. General Laborer	\$8.00	\$11.00
12. Operator General Machine	\$15.40	\$16.82
13. Welder, Advanced	\$12.39	\$13.55
14. Word Processing Operator	\$7.96	\$11.00

Key Points:

The Lake of the Ozarks Area is wage competitive with the State of Missouri and the country.